



# EmboCath<sup>®</sup> Plus

INFUSION MICROCATHETER



# Sequitor<sup>®</sup>

STEERABLE GUIDEWIRE



# Launching Higher Performance



## EmboCath® Plus

INFUSION MICROCATHETER

- **CONTROLLED DELIVERY**
  - Largest internal lumen diameter in its class–0.028”
  - 10% greater flow rate
- **FLEXIBLE, KINK RESISTANT AND DURABLE**  
PINSTRIPE® braid design provides optimal balance for agile tracking

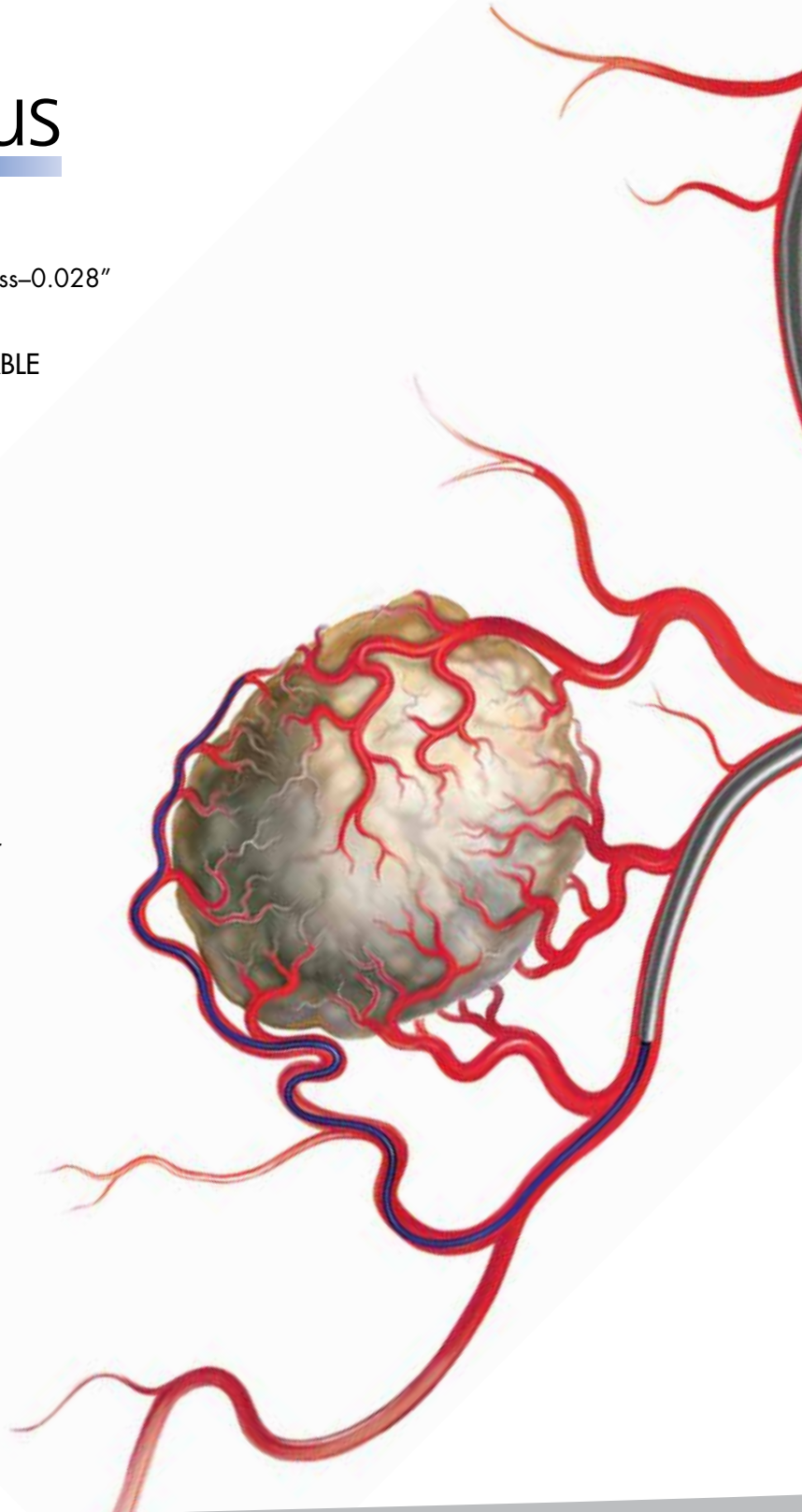
**EmboCath® Plus  
Catheter**



**Competitive  
Catheter**



- **SMOOTH INJECTION**  
Clear, chemo-compatible hub designed for smooth, fluent injection of microspheres
- **EXTRA BRIGHT TIP**  
Enhanced fluoroscopic visibility
- **EMBOSPHERE-FRIENDLY HUB**  
Facilitates embolic passage



# in Embolic Delivery



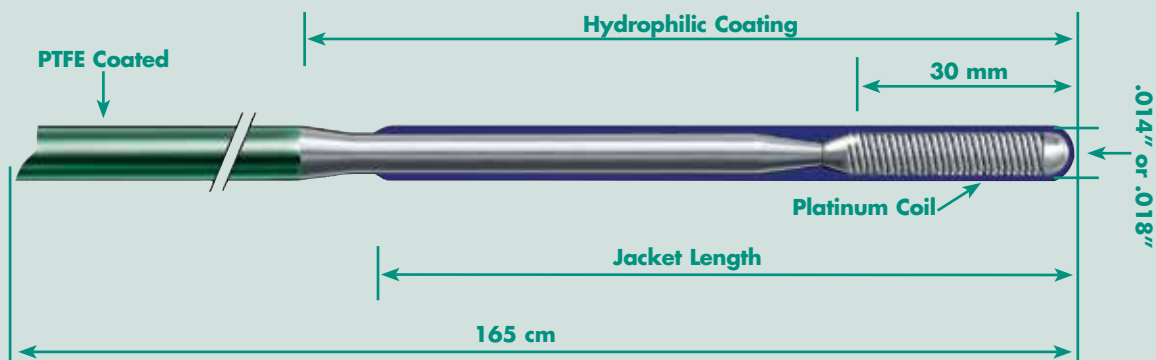
Navigation is the key to accurate embolic delivery

## Sequitor®

### STEERABLE GUIDEWIRE

- **LONGER DISTAL TIP**  
Designed to access pelvic and visceral anatomy and enable better navigation through tortuous vessels or vasculature
- **PREDICTABLE AND SELECTIVE PLACEMENT**  
Provides excellent torque response and flexibility
- **DURABLE ATRAUMATIC POLYMER TIP**  
Retains shape for selective vessel access without promoting spasm
- **HIGHLY VISIBLE DISTAL SEGMENT**  
Platinum coil combined with radiopaque loaded polymer provides vivid fluoroscopic visibility
- **SMOOTH NAVIGATION THROUGH TORTUOUS ANATOMY**  
PASSTHRU® hydrophilic coating provides ultra slippery surface

### Advanced Guidewire Construction



## Ordering Information

### Sequitor® Steerable Guidewire

Reference Code	Diameter (inches)	Tip Stiffness	Tip Configuration	Length
SQR1411	.014	LT	Angled	165 cm
SQR1811	.018	LT	Angled	165 cm
SQR1832	.018	LT	Straight	130 cm

### EmboCath® Plus Infusion Microcatheter

Product Code	Diameter French	Length (cm)	I.D. (inches)	Tip Shape
ECP100	3.0-2.9	100	0.028	Straight
ECP135	3.0-2.9	135	0.028	Straight



Merit Medical Systems, Inc. • 1600 West Merit Parkway • South Jordan, Utah 84095 • 1-801-253-1600 • 1-800-35-MERIT [www.merit.com](http://www.merit.com)  
 Merit Medical EUROPE, MIDDLE EAST AND AFRICA (EMEA) • Amerikalaan 42, 6199 AE Maastricht-Airport • The Netherlands • Tel: +31 43 358 82 22  
 BioSphere Medical, S.A. • Parc des Nations - Paris Nord 2 • 383 Rue de la Belle Etoile • 95700 Roissy en France • France  
 Free phone for specific country: Austria 0800 295 374 • Belgium 0800 72 906 (Dutch) 0800 73 172 (French) • Denmark 80 88 00 24 • France 0800 91 60 30  
 Finland 0800 770 586 • Germany 0800 182 0871 • Ireland (Republic) 1800 553 163 • Italy 800 897 005 • Luxembourg 8002 25 22 • Netherlands 0800 022 81 84  
 Norway 800 11629 • Sweden 020 792 445 • UK 0800 973 115

Embosphere®, EmboGold®, QuadraSphere®, EmboCath® Plus and Sequitor® are trademarks of BioSphere Medical, Inc.